

One-touch TOP PIVOT N-22W instruction manual

Thank you very much for purchasing our products this time.
Kindly follow "Precautions for safe handling" for safe using.

Precautions for safe using

If you do not follow below, it cause a serious problem.

1. Do not use anywhere that rain or water could come in contact with.
2. Please follow door size and weight as mentioned bellow to avoid to damaged to door or wall.
3. Tighten installation screw of top pivot for sure.
4. Start to install the door to the frame after top pivot is installed to door and frame for sure and do not install by welding or baking.
5. When carrying door, be aware that shaft of top pivot has been repealed.
6. After the door is installed, ensure yourself that the red line of shaft setting screw and the shaft position check line are horizontal aligned. Check if the green shaft checking pin (Ø5mm) appears in the shaft window.

Pivot model and applicable door sizes

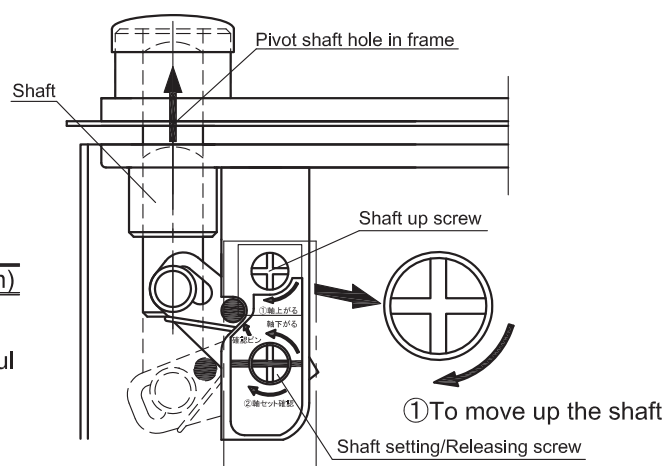
Pivot model	Applicable door sizes[mm]			Applicable door mass[kg]
	W	H	D	
N-22W	2,200max	2,400max	45min	240max

Package contents:

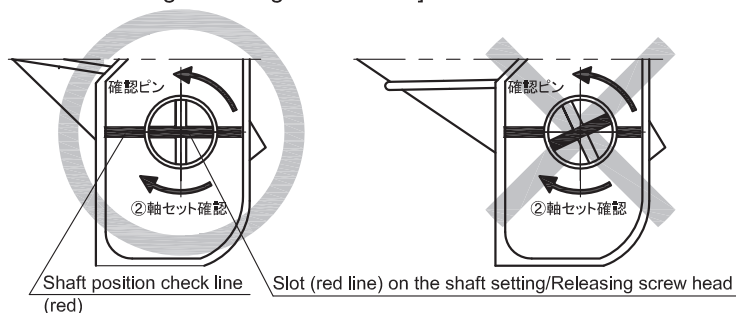
Item	Quantity
One-touch top pivot	1
Flat head screw M5X12L	8
Square rubber plate (small)	1
Instruction manual	1

Procedure to follow:

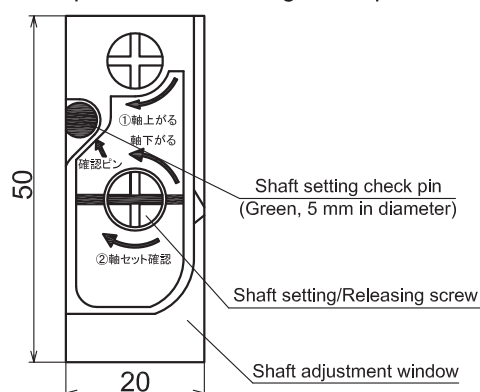
1. Bring the door with shaft of top pivot on door in line with hole of frame part top pivot, so these correspond with each other. Then turn shaft up screw clockwise by about 30°. Shaft of top pivot will move up and will be inserted in the hole of the frame part of top pivot.
2. Turn the shaft setting screw until red line aligns horizontally with shaft position check line, and the green shaft checking pin (Ø5mm) appears in the shaft adjustment window.
- When you can not confirm the above, the shaft is not correctly inserted into hole of top pivot and it will cause serious and harmful problems.
Please check and correct the installation and start procedure again.
3. Place the rubber coverplate.



[Checking the alignment of the red slot line on the shaft setting/releasing screw head]



Check point of shaft setting check pin



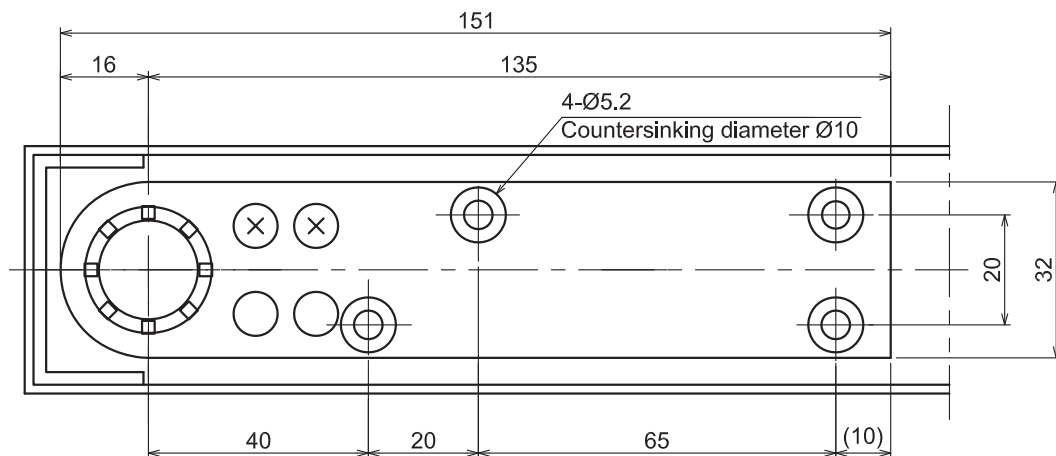
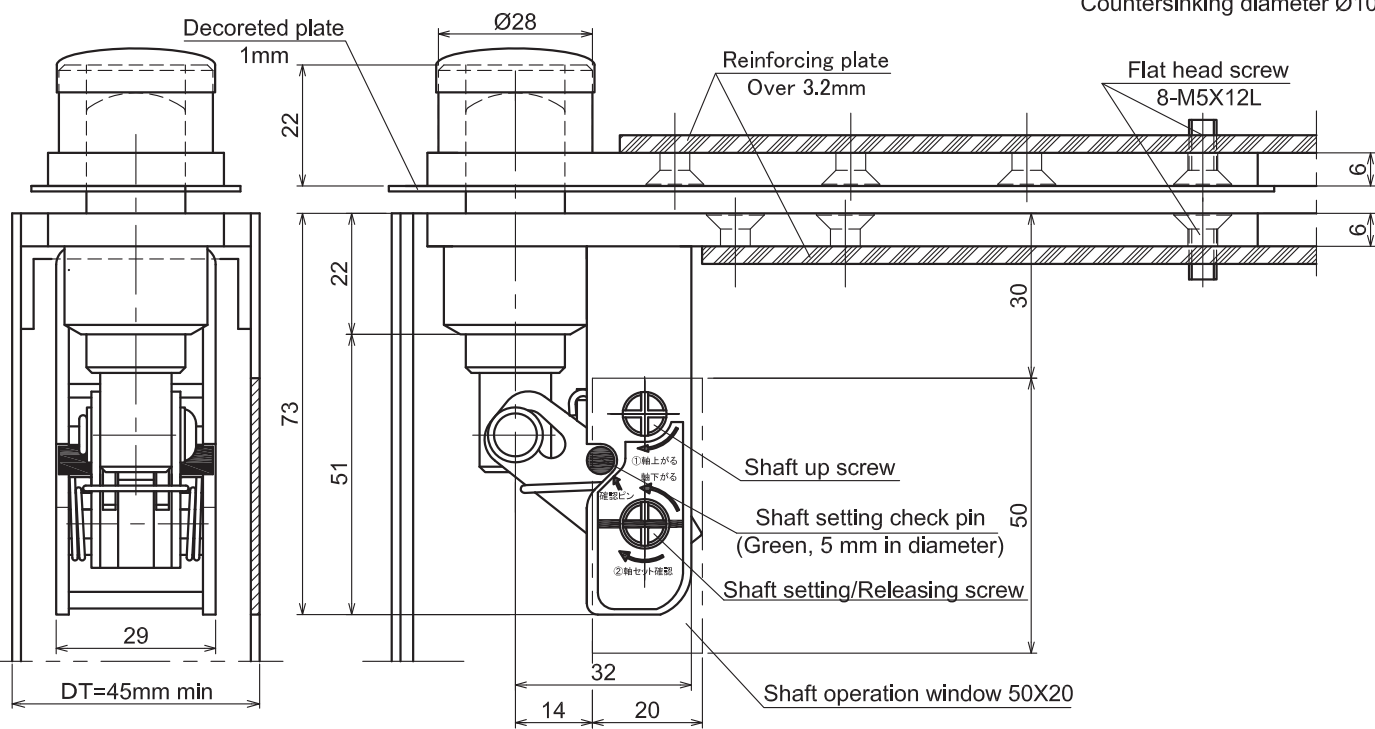
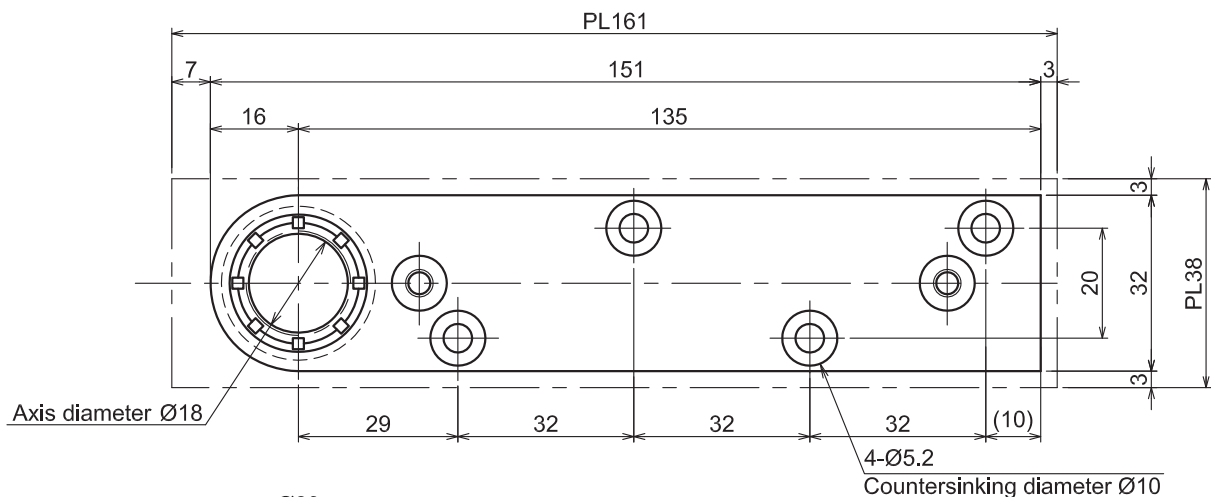
To remove the door, proceed as follows:

1. Remove the rubber coverplate.
2. Turn the shaft setting screw about 45 degrees anti-clockwise.
3. Please be sure you can hold the door in position.
4. Turn the shaft up screw anti-clockwise to the end.
5. The door can be carefully removed.

Change shaft setting/Releasing screw just in shaft setting screw

N-22W External Dimensions

[mm]



NITTO KOHKI CO., LTD.

Head Office:

9-4, Nakaikagami 2-chome, Ohta-ku, Tokyo 146-8555, Japan
 Tel : +81-3-3755-1111 Fax : +81-3-3753-8791
 E-mail : overseas@nitto-kohki.co.jp

Overseas Auto Hinge Sales Division:

8F, Orix Ueno bldg., 7-4-7 Ueno, Taito-ku, Tokyo 110-0005, Japan
 Tel : +81-3-5806-1030 Fax : +81-3-3843-5188
 E-mail : Kentokyo@nitto-kohki.co.jp

Web www.nitto-kohki.co.jp/e

TX10313-2