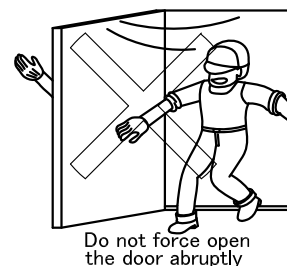
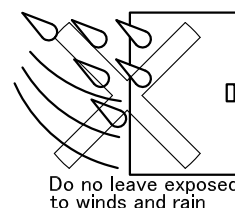
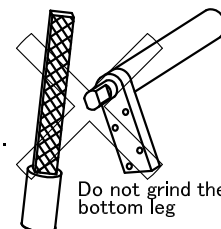


Center Hanging Type Auto Hinge AFD-22-B User's Guide

Thank you very much for purchasing our product. Before using the product, please read these Operating Instructions carefully and abide by safety precautions. After reading, keep the User's Guide on hand for quick reference.

Operating Instructions

1. Do not hammer in or grind the bottom leg at mounting and installation.
 - The bottom leg could break or crack, causing the door to topple over.
 - The door could tilt to cause damage to itself, the wall, or the floor or cause the Auto Hinge to fail.
 - The door could slam, getting your fingers pinched or cause contact or toppling accidents.
 2. Do not use Auto Hinges in a place that is exposed to direct moisture or rainwater.
 - The bottom leg could break, or the mounting screws could break or loosen to cause the door to topple over.
 3. Do not use Auto Hinges in places that are exposed to strong winds.
 - The door could slam, getting your fingers pinched or cause contact or toppling accidents.
 4. Do not force open the door abruptly.
 - It could get your fingers pinched or cause contact or toppling accidents.
 - Damage to the door, wall or other parts or Auto Hinge failures could occur.
 5. Do not force closing the door hastily while it is closing slowly.
 - It could get your fingers pinched or cause contact or toppling accidents.
 - Damage to the door, wall or other parts or Auto Hinge failures could occur.
 - The bottom leg could break or the mounting screws could break or loosen, causing door toppling accidents.
 6. Tighten Auto Hinge mounting screws firmly.
 - Periodically check once each year to see if the Auto Hinge is in firm position.
 - The door could topple over.
 - The door could tilt to cause damage to itself, the wall, or the floor or cause the Auto Hinge to fail.
 - The door could slam, getting your fingers pinched or cause contact or toppling accidents.
 7. The paint and foreign object dose not adhere to the shaft, screw and socket on the top pivot.
 - The shaft dose not mount smoothly and cause of the door fall dawn.
 8. If oil has oozed or leaked to disable the hydraulic pressure even after speed adjustment, keeping the door from closing slowly, replace the Auto Hinge immediately.
 - The door could slam, getting your fingers pinched or cause contact or toppling accidents.
 - Do not over loosen the Auto Hinge when adjusting its speed to avoid oil leakage.
 9. Check the specifications and opening orientation of the product and the names and quantities of the parts supplied with it.
 - Use of the product for the wrong door size could damage to the door, the wall, or the floor or cause the Auto Hinge to fail.
 10. Be sure to install the top pivot and Auto hinge after door and frame completed.
 - Do not welding after install the top pivot or Auto hinge.
 - Due to heat of transformation, The shaft dose not set well cause of door fall down.
 - Cause to oil leaking ,non speed control ,the door could slam, getting your fingers pinched ,cause of door fall down.
 11. Before welding Base and Base bracket , “R shape” toward door end. Be sure to welding on all 4 side at least over 10mm length .
 - Damage to the door and the door can not close.
 - Base comes out form base bracket ,The door fall dawn.
 - * Be sure to fix the base , use the reinforcement if floor is not strong enough.
 - Damage to slide base . cause fall down.



Part name and quantities	
Name	Quantity
AFD-22 body	1
Top pivot(N-22B)	1set
Slide Receptive base(U-6SN)	1
Spring set bar(ϕ 8)	2
Spring set pin(ϕ 8X15)	2
M5X12 countersunk head screw(pivot mounting)	8
M6X30 countersunk head screw(hinge mounting)	4
M3X50 pan head screw (detach for Spring set pin)	1
Decorative rubber plate (square big)	1
Decorative rubber plate (round)	1

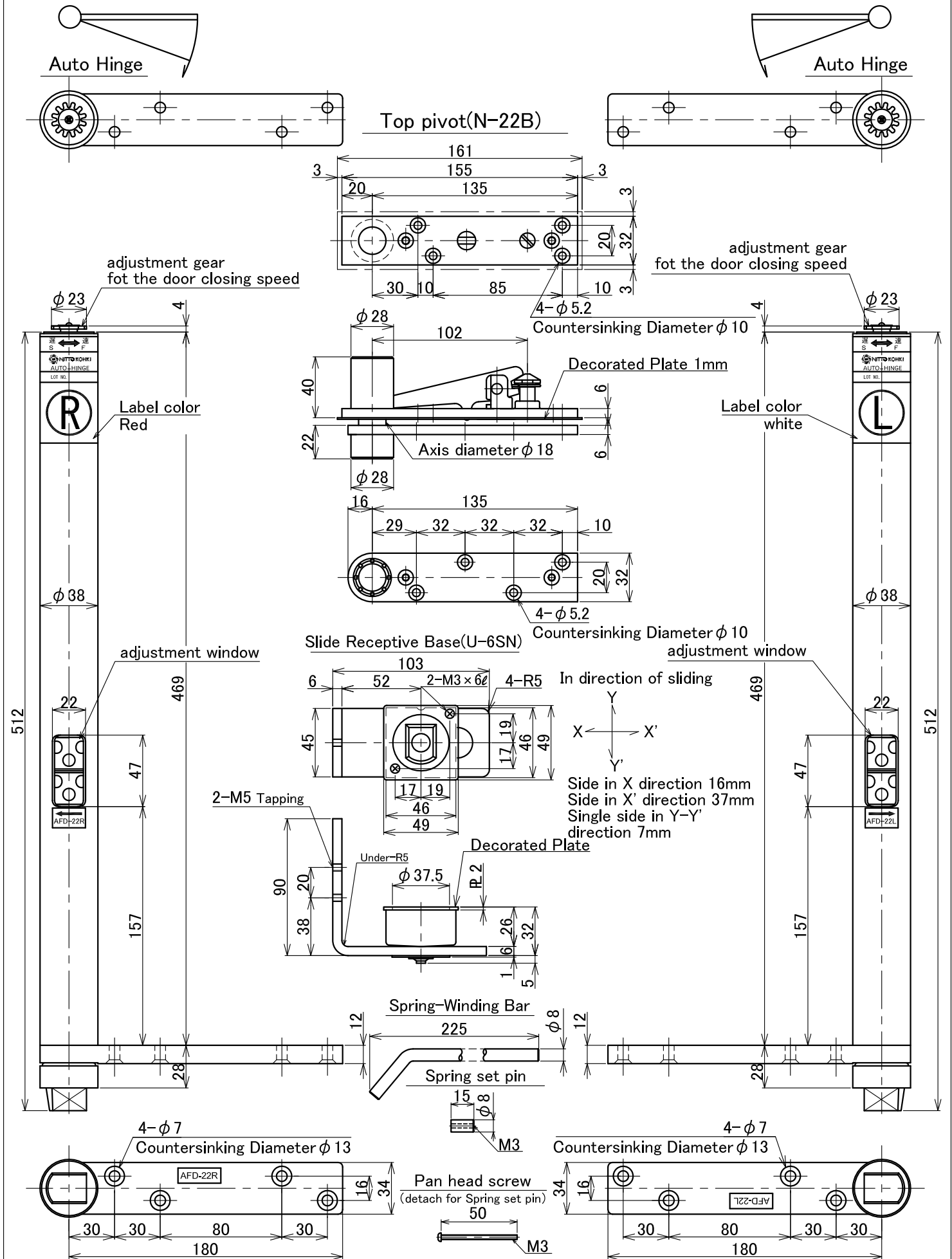
Product Specifications

Model		Label color	Applicable door size	Applicable door weight	Closing force	Maximum door opening angle	Spring set method	Stop mechanism
AFD-22L	Left-handed Opening	White	Width: 2,200mm or less High: 2,400mm or less	240 kg or less	49.1N·m	180 right-handed opening or one-way left-handed opening	Recoil type	No
AFD-22R	Right-handed Opening	Red	Thickness: 50mm or less					

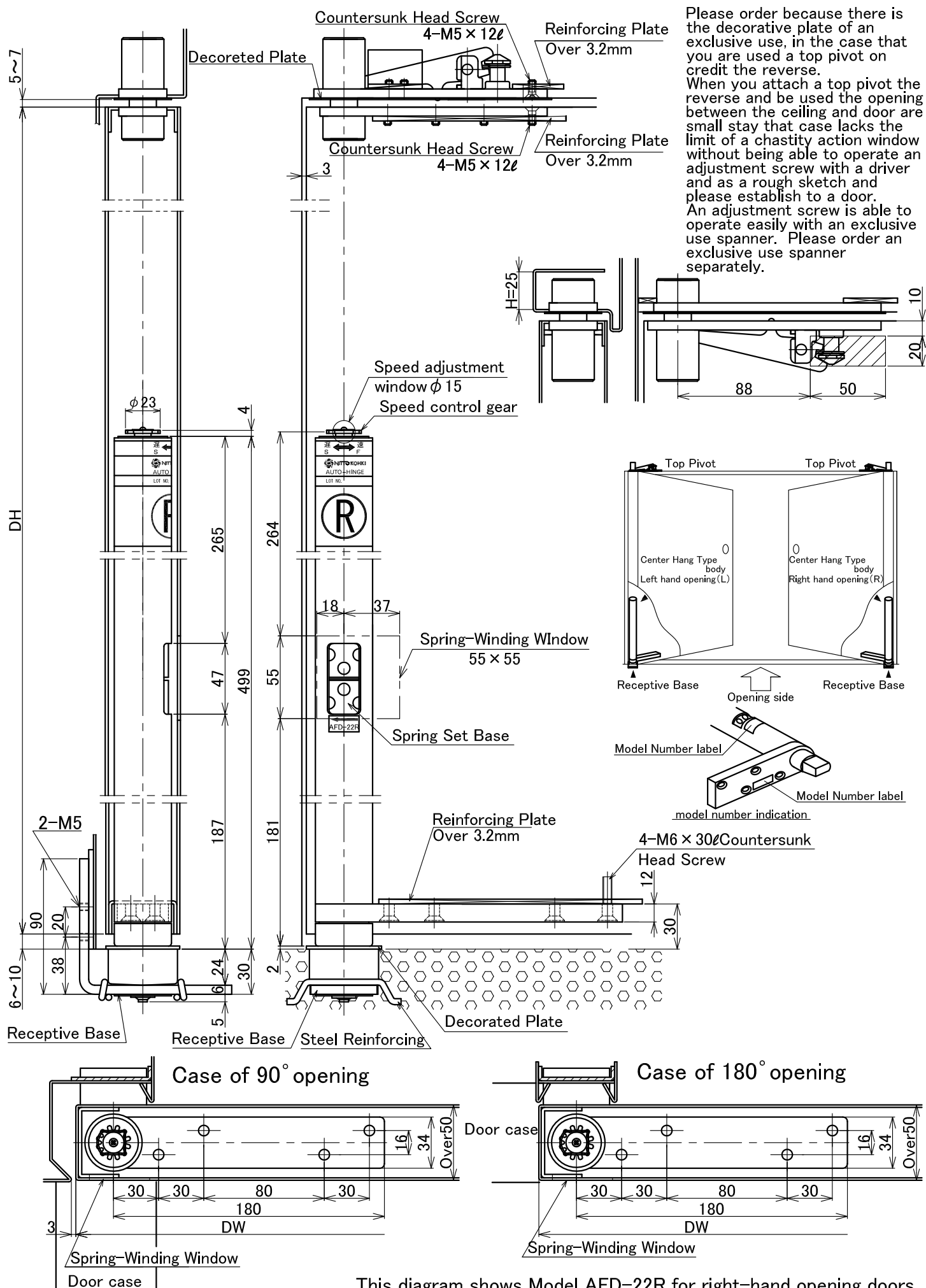
Model AFD-22-B External Dimensions

Right hand opening doors (AFD-22R)

Left hand opening doors (AFD-22L)



Fitting diagrams

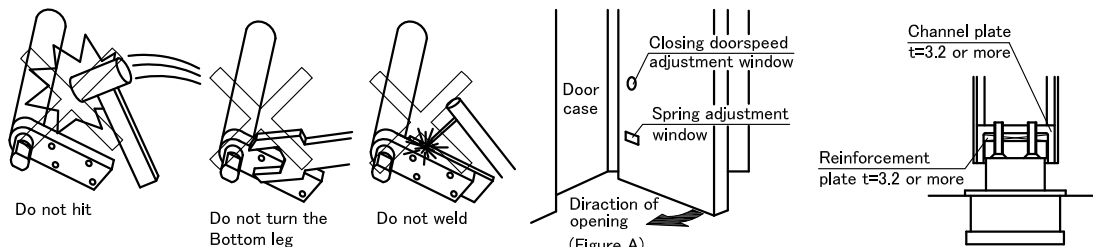


This diagram shows Model AFD-22R for right-hand opening doors.

Installation Instructions

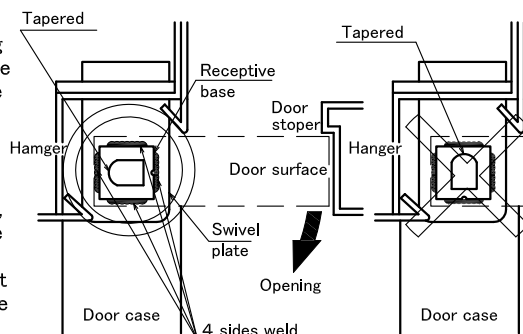
1. Pre-installation Tips

Do not hit or drop.
Do not turn the bottom leg.
Do not weld
Check the door adjustment windows (Figure A).
Check the hinge reinforcement plate and the channel plate.

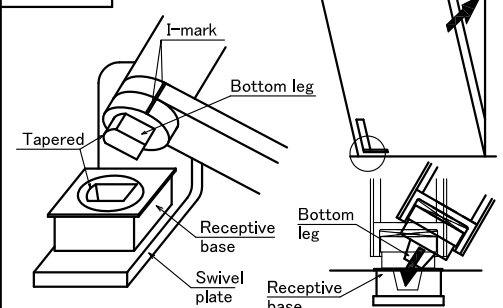


2. Install the Swivel Plate

Install the swivel plate so that bring the tapered end of the groove in the plate will face the wall side with the door closed as shown. Align the center of rotation of the top pivot with the swivel plate.
Weld the swivel plate and the receptive base to each other firmly, but not before making sure that the swivel plate is positioned in parallel with the surface of the door when it is closed and that it is level with the floor surface. Give a mortar finish to the swivel plate after welding some reinforcement slabs to it.

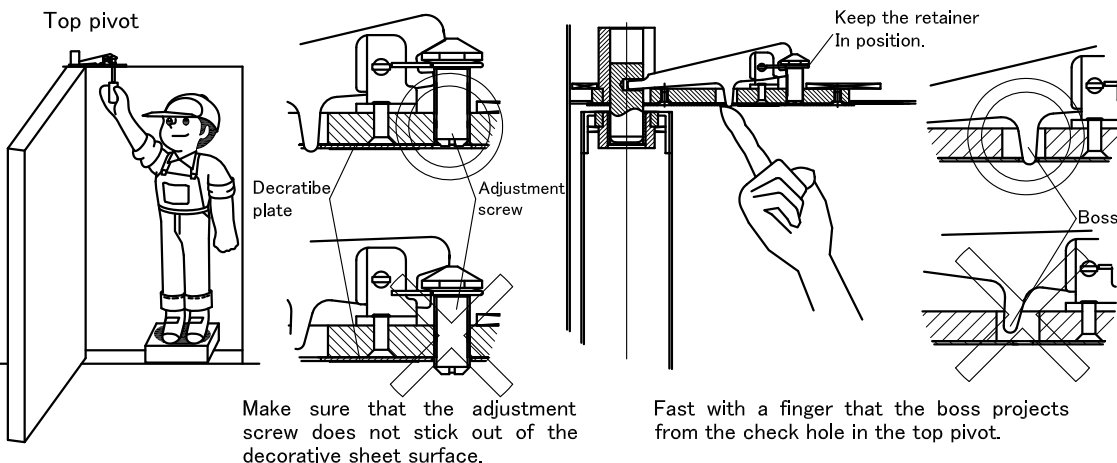


3. Hang



4. Top Pivot

With the door open, screw the frame-side pivot adjustment screws into position with a flat-head screwdriver by aligning with the top pivot center.
Tighten the adjustment screw until it is recessed in the Decorative plate surface, and insert the shaft fully into the door-side bearing.
When the work is complete, feel with a finger that the boss projects from the check hole in the top pivot.

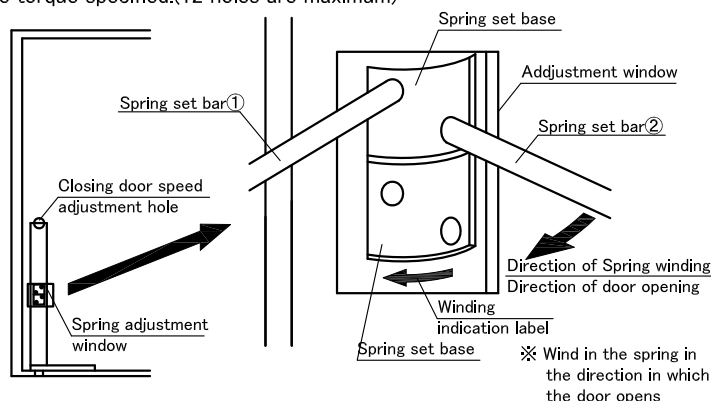


5. Wind In the Spring

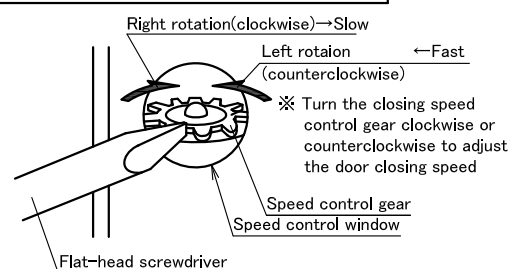
There are two springs (upper, and lower set spring), which are to be wind in with proper rotation.
Insert spring set bar① into the hole in the upper spring set base, and wind it.
Insert spring set bar② into next hole before remove bar①.
Wind in spring set base by spring set bar②, after removed bar①.
Please follow winding direction in accordance with label put on products.
Repeat this step as shown on the right, and insert set pin into spring set base firmly to lock upper spring set base.
Wind the lower set spring base similarly.

Door width DW	Entrainment
1,600~1,800mm	10
1,800~2,200mm	12

Note Wind in the spring in the same direction in which the door opens (marked by the arrow label on the products).
Insert the set bar into the holes positively for smooth setting.
Winding in the spring in required number of hole is prerequisite to produce torque specified.(12 holes are maximum)



6. Adjust the Door Closing Speed



Note: Do not overturn the closing speed control gear when adjusting the door closing speed. Oil may ooze or leak to disable the speed adjustment, risking human injury. Replace the Auto Hinge immediately when the speed adjustment is found disabled.

7. Close the Adjustment Window

Cover the adjustment area with the decorative rubber plate supplied.

