

CORPORATE PROFILE  
**NITTO KOHKI CO., LTD.**

## Working together to develop the industrial world, enrich lives and contribute to the society.

What we really care about, is you.

Your passionate involvement in the workplace.

NITTO KOHKI's "energy and labor-saving" technology focuses on you, to enable smooth operation.

Technology that gives time, energy and peace of mind, that will enhance growth of industry, enrich lives and contribute to society.

Dedicated to bettering your life.

### Philosophy

#### Corporate Motto

*Development provides corporate insurance.*

The word "development" in the corporate motto carries four meanings.

1. Development of products that contribute to society.
2. Development of sales markets.
3. Development of human resources.
4. Development of a system for organization management.

#### Action Principles

*Mobilize creativity and accumulate technology.*

*Cultivate morale and accumulate vitality.*

*Act with complete sincerity and accumulate people's confidence.*

These principles indicate our standards for employee behavior.

They also represent our hopes for the working environment to be a place to form personality and for our employees to lead happy lives.

#### Management Policy

*Contribution to society*

*Employees' wellbeing*

*Corporate development*

1. NITTO KOHKI develops, manufactures, and sells useful and valuable products in an effort to contribute to society on a broad basis.
2. NITTO KOHKI is committed to enhancing the wellbeing of employees and their families through enlightened management policies and practices.
3. NITTO KOHKI pursues appropriate corporate profitability, and aims at ongoing business development in order to realize a "contribution to society" and "the well-being our people".



## Top Message

Since our establishment, we have been committed to energy and labor-saving technology, striving to develop unique products to meet the needs of our times. We have always believed in manufacturing people-oriented products.

Our greatest strength is our over half a century of service to our customers around the world. From manufacturing of automobiles, trains, ships, and aircraft to fields like medical and living environments, our products contribute to enriching the lives of people all over the world.

Our business environment continues to change at a rapid rate, as demonstrated by the emergence of new technologies such as IT, AI, and IoT as well as decarbonization and changes in the working environment. Under these circumstances, we believe that our missions are to seek the new needs of the industrial world and to improve our product technology, quality, and services to a level that earns further recognition from customers in the global market place.

The NITTO KOHKI Group will continue to work together to develop industry, enrich people's lives, and realize a sustainable society.



**Akinobu Ogata**

Representative Director, President CEO

1956

Established the company in Kugahara, Ota-ku, Tokyo



"AIR MICROMETERS" as the origin NITTO KOHKI



Released Quick Connect Couplings "SP CUPLA"



1958

Released Portable Magnetic Base Drilling Machine "ATRA BL"

1950's

1960

Established Toyama Sales Office (currently Hokuriku Sales Branch)

1962

Established Osaka Sales Office (currently Western Sales Div.)

Released Pneumatic High Speed Multi Needle Chisel "JET CHISEL"



1963

Relocated the headquarters and Plant to the present location (Nakaikegami, Ota-ku, Tokyo)



1965

Established Nagoya Sales Office (currently Midland Sales Div.)

1968

Established Los Angeles Representative Office

1969

Established NITTO KOHKI U.S.A.

1960's

1970

Established New York Representative Office

1973

Succeeded in commercializing linear motor driven free piston "Linear Compressor"



1975

Released MEDO Brand "MEDO Bubble Bath A7001"

1977

Made Happy Precision Engineering (formerly MEDOTECH ) a group company

Completed construction and started operation of Ujiie Plant (currently TOCHIGI NITTO KOHKI)



1979

Established MEDO U.S.A. (currently NITTO KOHKI U.S.A.)

Established NITTO KOHKI EUROPE in U.K. (currently NITTO KOHKI EUROPE UK Branch)

1970's

1980

Participated in the exhibition in Paris, France



1988

Released "MULTI CUPLA"



1989

Established Singapore Representative Office (currently Singapore Branch)

Established a representative office in Germany

1980's

1990

Established WESTAIR-NITTO SALES (currently NITTO KOHKI AUSTRALIA)

Established the MIKIYA Science and Technology Foundation

1992

Established NITTO KOHKI DEUTSCHLAND (currently NITTO KOHKI EUROPE)

Established NITTO KOHKI AUSTRALIA MFG

1995

Shares were listed on the over-the-counter market

1997

Established NITTO KOHKI (THAILAND) as the pump production base (currently NITTO KOHKI INDUSTRY (THAILAND))



1998

Listed in the Second Section of the Tokyo Stock Exchange

1990's



2000

Listed in First Section of the Tokyo Stock Exchange



Established TOCHIGI NITTO KOHKI

Ujije Plant split off into TOCHIGI NITTO KOHKI

Acquired SHIRAKAWA NITTO KOHKI (formerly Shirakawa Densetsu) through M&A and made it a group company



Established Bangkok Representative Office under the umbrella of NITTO KOHKI Singapore Branch

Established Shanghai Representative Office (currently NITTO KOHKI (SHANGHAI))

2002

Established NITTO KOHKI COUPLING (THAILAND) as the "CUPLA" production base (currently NITTO KOHKI INDUSTRY (THAILAND))

2004

Established Shenzhen Representative Office (currently NITTO KOHKI (SHANGHAI) Shenzhen Branch)

2000's

2010

Completed the new headquarters building

2012

Established NITTO KOHKI (SHANGHAI)

Established NITTO KOHKI (SHANGHAI) Shenzhen Branch

2013

Established NITTO KOHKI INDUSTRY (THAILAND)

2014

Unifying Corporate Mark in NITTO KOHKI Group



2015

"HHV CUPLA" was adopted for the world's first mass-produced sedan-type fuel-cell vehicles



"HYGIENIC CUPLA" for the food industry entered the new industry



Established India Liaison Office (currently NITTO KOHKI INDIA)

2019

Established Indonesia Representative Office

2010's

2020

Toshio Mikiya, the founder, passed away

2022

Transited to Prime Market of the Tokyo Stock Exchange

2024

MEDOTECH and SHIRAKAWA NITTO KOHKI merged, and the company was renamed TOHOKU NITTO KOHKI

Release of the Electric vacuum end effector "e-VEE"

\*Available only in Japan



Established NITTO KOHKI INDIA

2025

Completed in Figures construction and started operation of TOHOKU NITTO KOHKI in Ozaso, Fukushima-shi



\*Photo courtesy of Matsui Corporation

2020's

## NITTO KOHKI Group Viewed in Figures

\*As of March 2025



Number of group employees

1052

Founded by Mr. and Mrs. Mikiya in Tokyo, today NITTO KOHKI covers a broad range of business areas with many employees around the world.



Number of worldwide bases

32

NITTO KOHKI has group companies, Sales Div., sales branches and production bases worldwide. Our energy-saving and labor-saving technology assists customers around the world.



Consolidated net sales

27.2 billion yen

With the objective to achieve sustainable growth, NITTO KOHKI has adopted the debt-free management to continue operating in the black since its founding. With its healthy and strong operating foundations, we continue to offer high-quality products to customers.



## Products

自動安全磁気ドリルスタンド

# ATRA

アトラ

日東工器株式会社

Contribute to Enriching  
People's Lives over the World  
with a Wide Array of Products

NITTO KOHKI's "energy-saving and labor-saving" technology focuses on you, to enable smooth operation. Technology that gives time, energy and peace of mind, that will enhance growth of industry, enrich lives and contribute to society.





## Quick Connect Couplings "CUPLA"



## Power & Machine Tools



## Electric Screwdrivers "delvo"



## Compressors & Pumps



## Door Closers



# CUPLA

Quick Connect Couplings "CUPLA"

Supporting the World with Connecting Technologies



## Quick Connect Couplings "CUPLA"

Quick Connect Couplings "CUPLA" allows for quick and secure connection/disconnection of fluid piping for air, water, oil and chemicals. It is used across the world in a wide array of fields including manufacturing plants for automobiles, electronic appliances, semiconductors and foods, in addition to resource development sites and transportation equipment such as fuel cell vehicles.

Fluids

Air

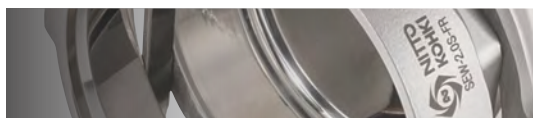
Water

Oil

Gas

Chemical





## CUPLA enables exible and fast connections in various uid lines

In 1956, we developed "SP CUPLA" which is equipped with a built-in valve with both a socket and a plug and can be used for a wide range of applications including air, water, oil and chemicals. In order to meet the demands for high durability and reliability, we have continued to evolve the CUPLA series, using cutting-edge technologies in fluid engineering, materials engineering and mechanical engineering. With a large product lineup of approximately 25000, we have responded to customer demands from various industries.



### New Energy



#### HHV CUPLA

The first dedicated coupling for fuel cell vehicles in Japan. Used to connect devices for replenishing high-pressure hydrogen at hydrogen stations.

Usage examples  
Hydrogen supply for fuel cell vehicles

### Food Processing



#### HYGIENIC CUPLA

Coupling for hygiene management with easy disassembling and cleaning functions. Won the Good Design Award in Japan.

Usage examples  
Piping for food and pharmaceutical manufacturing

### Electric and Machinery Product Manufacturing



#### MULTI CUPLA

Multi-port coupling that simultaneously connects multiple lines with different fluids. Applicable for automated systems.

Usage examples  
Pipes for manufacturing machinery and metal mold automatic exchange systems

### Semiconductor Manufacturing / Chemical



#### SEMICON CUPLA

Coupling for high purity chemicals used for various applications including semiconductor manufacturing.

Usage examples  
Piping for semiconductor manufacturing facilities and connecting piping for chemical tanks

### Electronic Precision Instruments



#### COMPACT ZERO SPILL CUPLA

Compact and high flow rate couplings that reduce liquid spillage when disconnecting. They can even be used in water cooling pipes in data centers.

Usage examples  
Coolant piping for supercomputers

# NITTO KOHKI'S Tools

## Power & Machine Tools

Realizing a Wide Range of Operations with Excellent Precision and Efficiency



## Power & Machine Tools

Power & Machine Tools are used for metal processing such as drilling, cutting, grinding, scaling, and screwing. They are used in various scenes all around the globe, ranging from construction, resource development, and infrastructure development to manufacturing and repairing of automobiles, trains, and aircraft. Our tools include a range of power sources, including pneumatic, electric and hydraulic, and are designed to meet the requirements for high precision processing machining and assembly.

Classification Pneumatic Electric Hydraulic





## Making High Quality Metal Processing Easy and Efficient

The origin of developing Power & Machine Tools lies in identifying and analyzing the potential needs of users, derived from the vast amount of information and market research. NITTO KOHKI strives to create unique products with advanced technology and reliability, while considering the environmental and social factors of the times.



Building and  
Facility  
Construction



### ATRA ACE

Portable magnetic base drilling machine with one-touch cutter replacement function.

Usage examples  
Drilling for bridges and steel beams

Steel Fabrication  
Shipbuilding



### JET CHISEL

Needle scaler that quickly processes metal surfaces with multiple needles. Both pneumatic and electric drive types are available.

Usage examples  
Removing weld slag, paint, and rust after welding

Automobiles,  
Railway,  
and Aircraft



### BELTON

Belt sander for sanding and grinding steel materials and die cast products.

Usage examples  
Deburring and finishing steel materials

Steel Drilling



### SELFER

Portable hydraulic puncher applicable to both mild steel and stainless steel.

Usage examples  
Punching for bridges and steel beams

Automation-  
supporting Tools



### Tools for automated machinery/robots

With our accumulated technology, we respond to the demands of automation.

Usage examples  
Energy and labor-saving

# delvo

Electric Screwdrivers

High precision screwing ensures high quality assembly



## Electric Screwdrivers "delvo"

Electric Screwdriver "delvo" is used for assembling electronic equipment such as computers, smartphones and printers, in addition to automotive components. It realizes stable production of high-quality products by screwing small diameter screws with precise torque control.

Features	Electric	High Precision
	Long Life	Low Voltage





## High precision torque management

A high precision torque is a must to improved assembly quality. "delvo" has high repeatable torque accuracy, and it is possible to equalized the tightening torque.



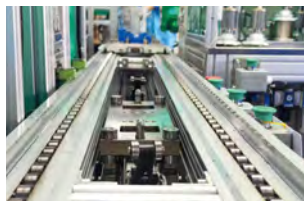
Screw fastening /  
Assembly



Screw fastening /  
Assembly



Screw fastening /  
Assembly



Assembly  
Robots



Torque  
Management



### A Series (Transformerless type)

Eco-friendly electric screwdrivers with built-in brushless motors in a transformerless profile.

Usage examples  
Assembling electronic equipment and automotive components



### S Series (Variable speed type)

Built-in brushless motors with automatic speed control and screw counting function.

Usage examples  
Assembling electronic equipment and automotive components



### DLV7300 Series

The dedicated controller realizes high-accuracy screw tightening.

Usage examples  
Assembling electronic equipment and automotive components



### C Series (Current control type)

Automatic screw tightening achieves a labor-saving or unattended process.

Usage examples  
Assembling electronic equipment and automotive components



### Torque Checker

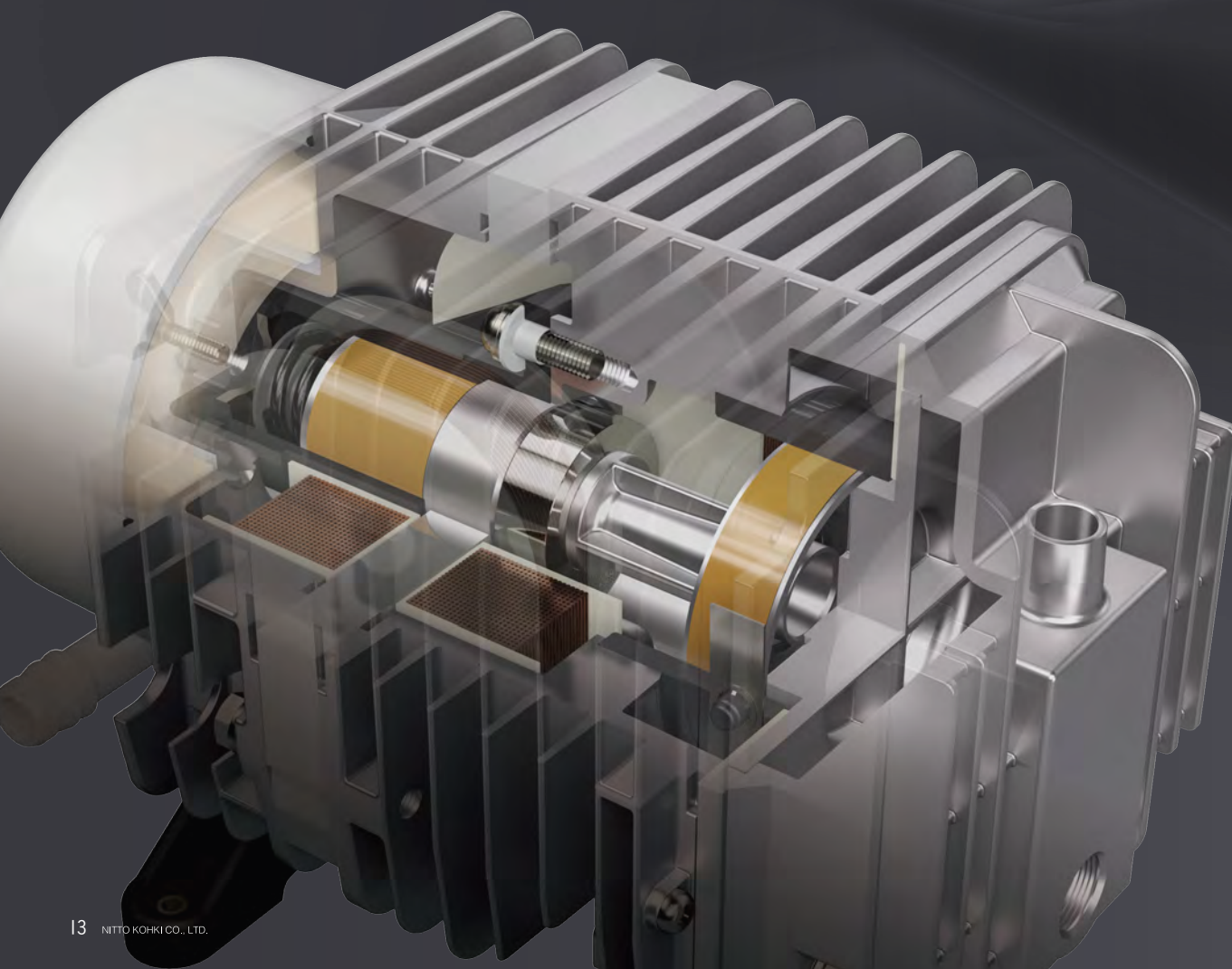
Maintaining high assembly quality with ease.

Usage examples  
Assembling electronic equipment and automotive components

# LINEAR

Compressors & Pumps

Innovative Products that Tap New Markets



## Compressors & Pumps

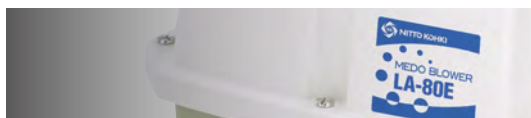
We provide trust and security to our customers by supplying energyefficient and compact pumps—including linear motor driven free piston type pumps—for quiet, clean transportation of fluids in a variety of fields such as medical, research, food, and electronic devices.

Features

Compact	lightweight	Longer lifetime
---------	-------------	-----------------

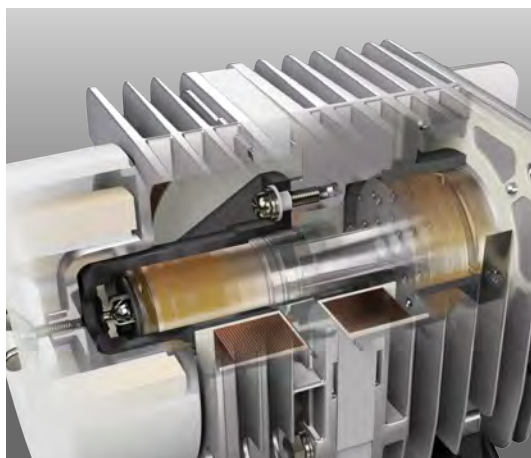
Low power consumption	Quiet	Low vibration	Clean
-----------------------	-------	---------------	-------





## Linear Motor Driven Free Piston Type Pumps

The internal piston the cylinder, which integrates the motor and compression unit, moves smoothly back and forth in synchronization with the power supply frequency, driven by the magnetic force of the electro-magnet and the restoring force of the spring.



Medical



### Compressor

Linear motor driven free piston type compressors that supply clean air.

Usage examples  
Endoscope and inhaler

Built-in Pump



### Vacuum Pump

Cup seal type vacuum pumps driven by a brushless DC motor.

Usage examples  
Vacuum glass shheet handling equipment

Chemicals



### BIMOR PUMP

A compact, lightweight liquid pump driven by a piezoelectric element and integrated in a resin housing.

Usage examples  
Supply and transportation of liquids (ink, washing liquids, reagents, etc.)

Precision Parts Assembly



### Linicon

Compressor & vacuum pump equipped with standard cover and power code for ease of use at the worksites.

Usage examples  
Assembling precision parts and vacuum material handling equipment

Houses



### MEDO BLOWER

Quiet with low vibration, this stationary-type blower contains a linear motor driven free piston type pump.

Usage examples  
Aeration type septic tank, ventilation, and aquaculture

# Door Closer

AUTO-HINGE & Sliding Door Closer

Providing Safety and Comfort for Everyday Life



## Door Closers

Door closers are mechanical devices that quietly and safely close doors. They are used all over the world in a variety of doors for medical institutions, offices, transportation equipment, and other facilities.

Features

Quiet

Smooth

Safe

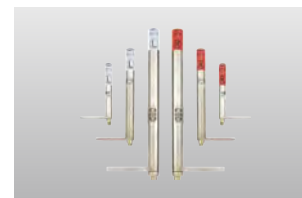
Stylish





## AUTO-HINGE Series

AUTO-HINGE brands automatically close doors using hydraulic mechanisms and springs. Since they don't use door arms, they also make for a neat appearance.



### AUTO-HINGE Center Hang Type

Fully contained within the door to realize a stylish appearance. Often used for fire doors due to excellent functionality and durability.

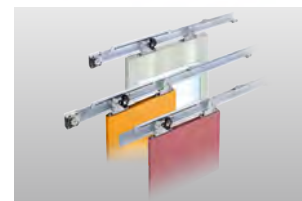
Usage examples  
Fire doors and telephone box doors



### AUTO-HINGE Flag Type

Use hydraulic mechanisms and springs to quietly and smoothly open and close doors. A simple hinge type design that allows for self-closing.

Usage examples  
Doors in public facilities, offices, and entrance halls



### Sliding Door Closer

A door closer that allows sliding doors to be closed quietly, firmly, with minimal force, and at any speed.

Usage examples  
Doors in medical facilities, public facilities, welfare facilities





## Satisfying Customers All Over the World

From the ocean floor to outer space, our unique products are used in numerous environments all over the world. We meticulously develop products based on the presumption that they may be used with different languages, environments, and legal systems.



## Taking on New Markets

In order to deliver new products that meet customer needs as soon as possible, we're focusing on human resource development and hiring young engineers. We are striving to overcome technical barriers, develop new markets, and provide unique products.



## In-House Research Facilities to Produce High Quality

In order to deliver safety and security to our customers, we have established an in-house research facility where we conduct product R&D. By using measurement, analysis, and testing equipment, we are striving to produce even higher quality products.

## Research & Development

## Developing People-Oriented Products

We aim to contribute to society by providing people-oriented products that use energy and labor-saving technology. Over the course of our company's history, we have accumulated expertise on a vast number of disciplines including fluid engineering, materials engineering, mechanical engineering, electrical engineering, and design engineering.

We will continue to take on new research and development challenges in order to use our technologies to fulfill the needs of customers in a diverse range of industries.



## Becoming a Company that Continues to Take on Challenges



**NITTO KOHKI CO., LTD.**

Headquarters, R&D Lab





Unique Production Technology

We are developing production technology to ensure customers have a stable supply of high-quality products that cover a wide range of industries and trades. In order to combat shortages in the labor force and maintain quality, we will do our best to further improve production efficiency and strengthen technological development.



Optimal Production System

We are promoting production leveling to enhance our competitive edge. The entire group is working to create a system that can respond with optimal production.



Safety and Security for Customers

We comply with all laws and regulations to protect our customers from dangers and hazards regarding chemicals, electricity and machinery. In production, we provide safety and security to customers by conducting material analysis of parts.

Production & Quality Assurance

Delivering Satisfaction and Reliability to Customers Around the World

We are working on a unique production and quality control system to give customers around the world the satisfaction and reliability they desire. We strive to ensure a consistent and stable supply of high-quality products that are indispensable to our customers.



Maintaining and Improving Quality



JQA-2025  
JQA-EM4057  
H.Q./R&D Lab



JQA-1039  
JQA-EM1934  
TOCHIGI NITTO KOHKI CO., LTD.



JQA-EM6395  
JQA-QM8194  
NITTO KOHKI INDUSTRY (THAILAND) CO., LTD.

NITTO KOHKI Group's Production Bases: Always Innovating



TOCHIGI NITTO KOHKI CO., LTD.

Production of quick connect couplings "CUPLA," compressors and pumps, and medical devices



TOHOKU NITTO KOHKI CO., LTD.

Production of machine tools, electric screwdrivers "delvo", and door closers



NITTO KOHKI INDUSTRY (THAILAND) CO., LTD.

Production of quick connect couplings "CUPLA," compressors and pumps, and machine tools

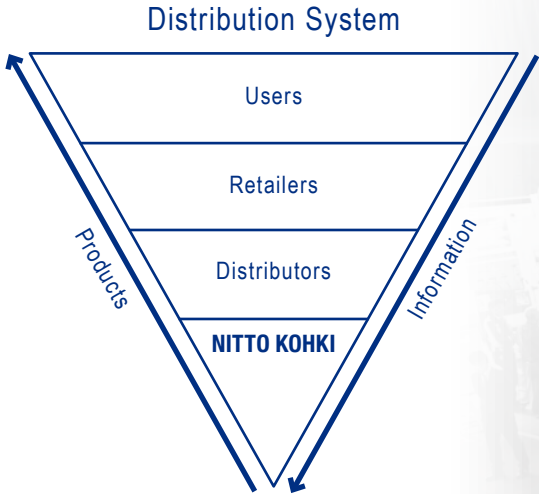
Unique Sales and Marketing



We conduct special sales and marketing activities to show customers just how worthwhile unique NITTO KOHKI products are. We visit customers directly with trucks to let customers actually see, touch and experience our products. We also host exhibitions that attract many customers. You can also check out our wide variety of products through videos and information on YouTube and our website.

Marketing Activities and a Distribution System Closely Connected to Local Customers

In order to meet the expectations of customers who use our products, we engage in activities that accurately capture customer needs and work with distributors and dealers who are familiar with local customers. We will continue to promote our optimal distribution system and marketing activities going forward.







## Finely Tuned After-Sales Services

We provide after-sales services to customers all over the world. We have established a network of repair services with distributors and dealers and educate them to improve techniques by implementing workshops on product knowledge.



## Active Development of Exhibits for Trade Shows

We have participated in trade shows around the world, showing the value of our products to customers across multiple industries and trades. We intend to create even better products by listening to customers opinions at the trade show about their requests.



## Products Can Be Purchased and Used Worldwide

NITTO KOHKI products can be purchased all over the world with after-sales services readily available as well. We set up regional headquarters, branches and offices in each area of the world with distributors and retailers who are very familiar with the region and can therefore support customers.

## NITTO KOHKI's Global Network

### NITTO KOHKI Group



#### ● NITTO KOHKI CO., LTD.

Headquarters , R&D Lab  
Eastern Sales Div.  
Tokyo Branch I  
Tokyo Branch II



Western Sales Div.  
Osaka Branch I  
Osaka Branch II



Midland Sales Div.  
Nagoya Sales Branch

#### ● TOCHIGI NITTO KOHKI CO., LTD.

Production base

#### ● TOHOKU NITTO KOHKI CO., LTD.

Production base

Sapporo Sales Branch, Sendai Sales Branch, Niigata Sales Branch, Matsumoto Sales Branch, Kitakanto Sales Branch, Shizuoka Sales Branch, Hamamatsu Sales Branch, Mikawa Sales Branch, Hokuriku Sales Branch, Kyoto Sales Branch, Takamatsu Sales Branch, Okayama Sales Branch, Hiroshima Sales Branch, Fukuoka Sales Branch, Western Japan Distribution Center



#### ● U.S.A.

#### NITTO KOHKI U.S.A., INC.

Sales in the Americas market



#### ● Germany

#### NITTO KOHKI EUROPE GMBH

Sales in Europe, the Middle East and Africa market



#### ● UK

#### NITTO KOHKI EUROPE GMBH

#### UK Branch

Sales in Europe, the Middle East and Africa market

- Singapore
- Indonesia
- Thailand

NITTO KOHKI CO., LTD. Singapore Branch

NITTO KOHKI CO., LTD. Indonesia Representative Office

NITTO KOHKI CO., LTD. Bangkok Representative Office

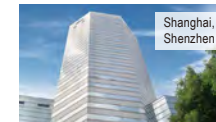


#### ● Australia

#### NITTO KOHKI

#### AUSTRALIA PTY LTD

Sales in the Oceania market



#### ● China

#### NITTO KOHKI (SHANGHAI) CO., LTD.

#### NITTO KOHKI (SHANGHAI) CO., LTD.

#### Shenzhen Branch

Sales in the China market



#### ● India

#### NITTO KOHKI INDIA PVT LTD

Sales in the India market

#### ● Thailand

#### NITTO KOHKI INDUSTRY (THAILAND) CO., LTD.

Production base



## Promoting Harmonious Cooperation with Society to Be a More Trusted Company

Together with Stakeholders

Social and  
Environmental

Local  
Communities

Customers

Trading  
Partners

Shareholders  
and Investors

Employees

## Environmental Initiatives

NITTO KOHKI has obtained ISO 14001 certification for its environmental management systems, including its Japanese and Thai plants. Furthermore, the NITTO KOHKI Group is actively striving to address environmental issues through environmentally conscious design, green procurement, etc.

### Environmentally Conscious Design

NITTO KOHKI implements environmentally conscious design, known as Design for Environment (DfE), which reduces the burden on the environment as much as possible, from the development stage through to disposal of products by the consumer.

### Green Procurement

The Green Procurement Standard is the NITTO KOHKI Group's fundamental concept concerning procurement activities to reduce substances that are harmful to the environment, indicating specific requests to suppliers.



## Improvement of Employee Satisfaction

NITTO KOHKI is advancing and improving creation of workplaces where all employees can work happily.

Every year, many employee family members attend Family Visit Day, helping them to better understand our work, and providing children with an insight into working life. In addition, the company has a wide range of welfare benefit programs, including a subsidy scheme for social gatherings, encouragement to obtain official qualifications, child rearing and nursing care systems.



Family visit

## Corporate Citizenship



Cooperating with a seminar hosted by the Japan International Cooperation Agency (JICA)



Support activities for people affected by the floods in Thailand



Inviting people with disabilities to game



Trash cleanup activities along nearby riverbanks

## Management

We have introduced and operate corporate governance, compliance and business continuity management (BCM) systems to be faithful to our stakeholders and to continue to build trust.

### Compliance

We have established basic provisions for acting decently in accordance with laws and regulations, company rules, corporate logic and social norms. Also, we regularly hold compliance education for all employees, and have established internal and external whistleblower hotlines.

### Business Continuity Management System

We have established backup systems to minimize the impact on our customers in production and sales in the event of an earthquake, flood or other natural disaster.



Disaster drill



Lifesaving training





YouTube  
NITTO KOHKI  
Global Channel



Website

NITTO KOHKI CO., LTD.

Capital	1,850 million yen
Stock Listing	Tokyo Stock Exchange, Prime Market, Security Code : 6151
Head Office	2-9-4, Nakaikegami, Ota-ku, Tokyo 146-8555, Japan
URL	<a href="https://www.nitto-kohki.co.jp/e/">https://www.nitto-kohki.co.jp/e/</a>